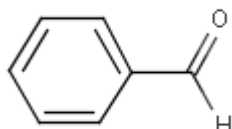


## Benzaldehyde

### Structure



|                    |                                   |
|--------------------|-----------------------------------|
| Molecular formula: | C <sub>6</sub> H <sub>5</sub> CHO |
| Molecular weight:  | 106                               |
| UN Code No.        | 1990                              |
| CAS No.            | 100-52-7                          |
| IMCO Class no.     | 3119                              |

### Synonyms

Benzoic aldehyde, Almond artificial essential oil, Benzenecarboxaldehyde, Benzene carboxaldehyde

### Specification

|                           |                                    |
|---------------------------|------------------------------------|
| Appearance                | Colourless to yellow colour liquid |
| Colour                    | 50 APHA (max.)                     |
| Odour                     | Bitter almonds                     |
| Purity (by GC)            | 99.5 % (min.)                      |
| Boiling point             | 179 °C                             |
| Acidity (as Benzoic acid) | 0.5 % (max.)                       |
| Chloride content          | 50 ppm                             |
| Specific Gravity at 27 °C | 1.040 to 1.045                     |

LANXESS Distribution GmbH / Katzbergstr. 1 / 40764 Langenfeld / Germany / [www.lanxess-distribution.com](http://www.lanxess-distribution.com)

*This information and our technical advice - whether verbal, in writing or by way of trials - are given in good faith but without warranty, and this also applies where proprietary rights of third parties are involved. Our advice does not release you from the obligation to check its validity and to test our products as to their suitability for the intended processes and uses. The application, use and processing of our products and the products manufactured by you on the basis of our technical advice are beyond our control and, therefore, entirely your own responsibility. Our products are sold in accordance with the current version of our General Conditions of Sale and Delivery.*

*In the United States of America the LANXESS business is conducted by LANXESS Corporation, Pittsburg, PA. Customers in the US are kindly asked to address their requests directly to this legal entity.*

## Transport, toxicity and hazards

Please refer to our safety data sheet.

## Labeling

Classification and labeling have been determined according to EU Directives 67/548/EEC and 1999/45/EC (including amendments) and take into account the intended product use.

Hazard symbol or symbols                      Harmful, Contains benzaldehyde

Risk phrases    R22- Harmful if swallowed.

Safety phrases    S24- Avoid contact with skin.

LANXESS Distribution GmbH / Katzbergstr. 1 / 40764 Langenfeld / Germany / [www.lanxess-distribution.com](http://www.lanxess-distribution.com)

*This information and our technical advice - whether verbal, in writing or by way of trials - are given in good faith but without warranty, and this also applies where proprietary rights of third parties are involved. Our advice does not release you from the obligation to check its validity and to test our products as to their suitability for the intended processes and uses. The application, use and processing of our products and the products manufactured by you on the basis of our technical advice are beyond our control and, therefore, entirely your own responsibility. Our products are sold in accordance with the current version of our General Conditions of Sale and Delivery.*

*In the United States of America the LANXESS business is conducted by LANXESS Corporation, Pittsburg, PA. Customers in the US are kindly asked to address their requests directly to this legal entity.*

LANXESS AG, Leverkusen, Germany